

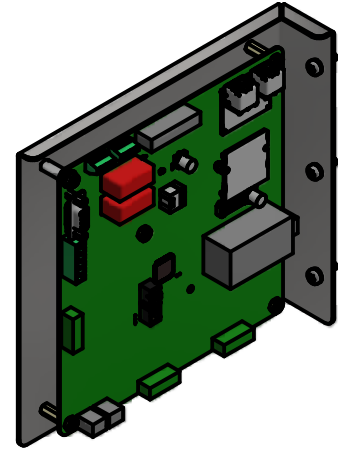
HGP Part Number	HorsePower (HP)	kVar	Harmonic	Voltage (V)	Hz.	Phase
HGP0025DW3----	25	5.7	5th	208	60	3

HGP Part Number	Schematic Drawing #	Approx Weight (LBS)
HGP0025DW3S0000	28697-208-2S	269
HGP0025DW3C0000	28697-208-2	271
HGP0025DW3C000H	28697-208-2H	275
HGP0025DW3S1000	29597-DWPQ1	272
HGP0025DW3C1000	29597-DWPQ	274
HGP0025DW3C100H	29597-DWPQH	278

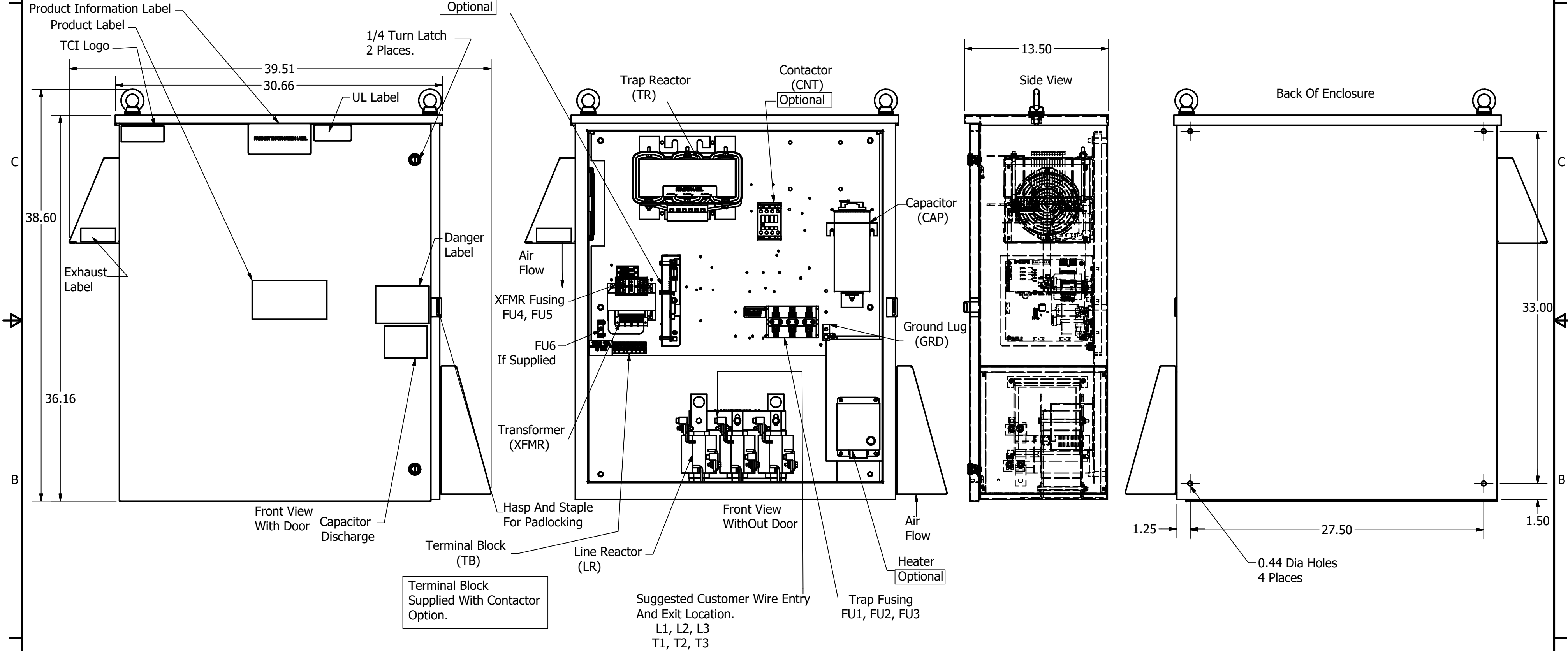
Note: For Torque Information
See IOM Manual

Customer Connections.
L1, L2, L3, T1, T2, T3
Wire Range: 2/0 AWG to 14AWG.

Ground Lug
Wire Range: 2/0 to 14 AWG.



PQConnect Board
Optional



HGP0025DW3----						
Components	S0000	C0000	C000H	S1000	C1000	C100H
Line Reactor (LR)	x	x	x	X	X	X
Trap Reactor (TR)	x	x	x	X	X	X
Capacitor (Cap)	x	x	x	X	X	X
Trap Fusing, FU1, FU2, FU3	x	x	x	X	X	X
Contactor (CNT)		x	x		X	X
Transformer (XFMR)	x	x	x	X	X	X
XFMR Fusing, FU4, FU5	x	x	x	X	X	X
Heater			x			X
PQConnect Board				X	X	X

NOTE: USE ONLY HUBS OR FITTINGS THAT COMPLY WITH UL514B FOR TYPE 3R ENCLOSURES

Customer Is Responsible For Installation to Meet All National And Local Electrical Codes.

Material(s) Shall be RoHS Compliant

TCI, LLC CLAIMS PROPRIETARY RIGHTS IN THE MATERIAL HEREIN DISCLOSED. IT IS SUPPLIED WITHOUT PREJUDICE TO ANY PATENT RIGHTS OF TCI AND MAY NOT BE REPRODUCED OR USED TO MANUFACTURE ANYTHING SHOWN THEREIN WITHOUT WRITTEN PERMISSION FROM TCI.				TOLERANCES (EXCEPT AS NOTED)	W132 N10611 Grant Drive Germantown, WI 53022 HarmonicGuard Passive HGP, 25HP, 208/3/60, Type 3R
				DECIMAL	
				.XX ± .25 .XXX ± .10	
				FRACTIONAL ± 1/16	
	As Designed	06/22/20	JRN	ANGULAR ± 1°	DRN BY: JRN DATE: 06/22/20 108673DG SCALE: 1/8 APRVD: SIZE: C SHT. 1 OF 1